



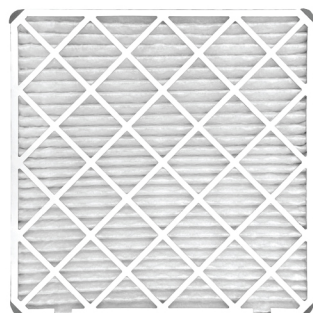
Perfecting the Air



MERV 8 DAIKIN AIR FILTER

High Performance Prefilter

Pure air with a simple step





Features and Benefits

Pure Air

✓ MERV 8 Rating

This filter is a high performance prefilter that has achieved MERV 8 rating.

✓ PM2.5 Filtration

This filter can catch fine particles that could not be removed by the existing prefilter, capturing 97% of 1.0-3.0 μm particles and 99% of 3.0-10 μm particles when air passes through filter 10 times.

✓ Filter Exchange Twice a Year

Replace the filter twice a year in order to maintain the filter's high performance.

Simple Step

✓ Chamberless Filter

Additional parts and difficult installation works are unnecessary. Just replace the existing prefilter.

✓ Retrofit to Existing Indoor Unit

Attachable to your current round flow cassette for IAQ improvement.



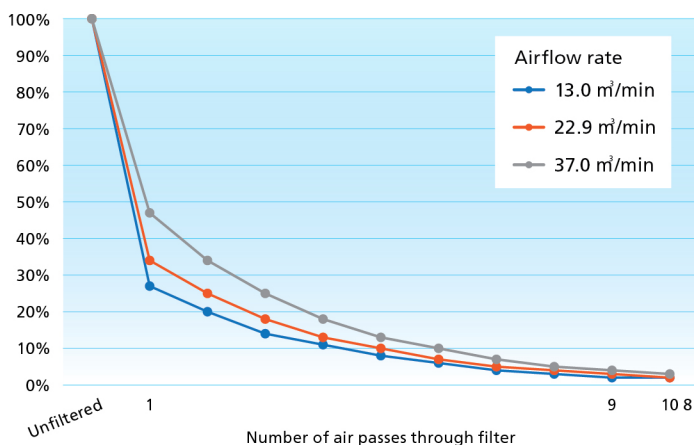
Filter Efficiency

Our in-house test results have proven that this filter can meet the MERV 8 standard.

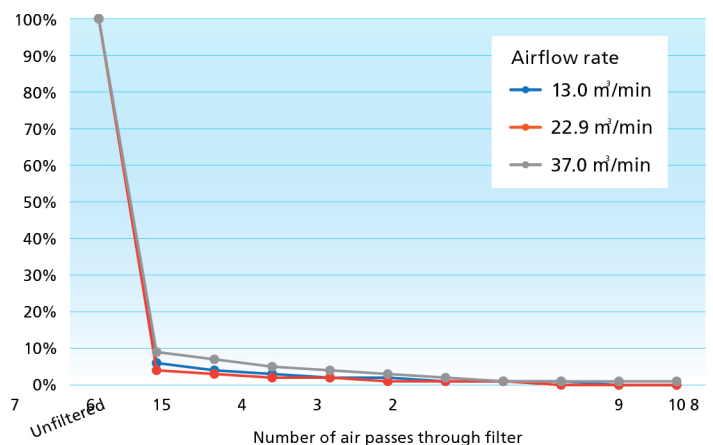
In addition, as the air conditioning system continues to operate, the air in the room will pass through this filter many times. As a result, more harmful substances in the air can be captured.

For example, more than 97% of 1.0 - 3.0 μm sized substances, including PM2.5, can be collected by circulating air through the filter 10 times.

Percentage of 1.0 – 3.0 μm particles remaining in the indoor air *1



Percentage of 3.0 – 10.0 μm particles remaining in the indoor air *1



*1. This figure is simulated based on the actual measured data of one-pass performance and assumes that particles do not occur continuously in the room. By repeating the one-pass performance about 2-10 times, it can expect the attenuation as shown in the figure.



Specifications

DAIKIN AIR FILTER High performance prefilter

BAF552A160



Round flow cassette (including with Sensing Type)

VRV SkyAir



Model Name		BAF552A160		
Brand		DAIKIN		
Production Base		AAF Malaysia		
Performance		MERV 8		
Dimensions	mm	526 x 523 x 35		
Airflow rate	m ³ /min	13.0	22.9	37.0
Initial Pressure Drop*2	Pa	18.1	35.8	81.4
Weight	g	520		
Lifetime *3		6 months (1,250 hours)		
Reuse		Non-reusable		

Note 1. It is necessary to set a high ceiling mode on site to prevent a decrease in air volume when installing the filter. The setting number differs according to each model. Please refer to the installation manual.

*2. This result is based on the test of the filter only. The results may be different in the actual use environment where the filter is installed in the indoor unit.

*3. Filter lifetime may vary depending on the condition of the operating environment. Certain instances such as high traffic areas, pets or smokers in a residence, or other situations may require more frequent changes.



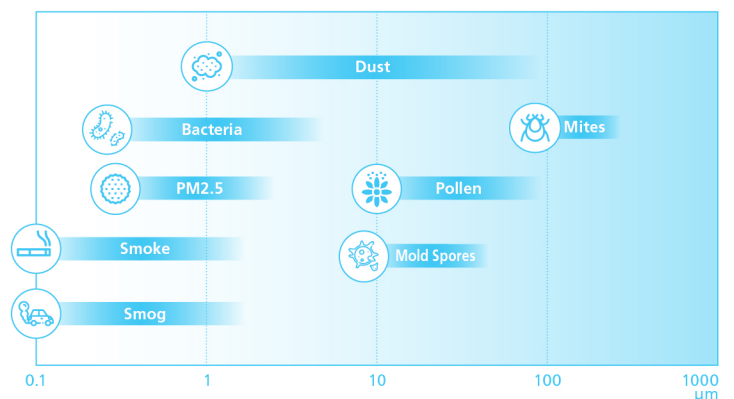
What is MERV rating?

Fig. 1 Criteria for achieving MERV 8 (ASHRAE52.2 : 2017)

MERV	Composite Average Particle Size Efficiency, % , In Size Range, μm			
	E1 Range (0.3 - 1.0)	E2 Range (1.0 - 3.0)	E3 Range (3.0 - 10)	10 μm ~
1 - 4	n/a	n/a	<20	Effective for collecting
5	n/a	n/a	<20	-
6	n/a	n/a	35≤	-
7	n/a	n/a	50≤	-
8	n/a	20≤	70≤	-
9	n/a	35≤	75≤	-
10	n/a	50≤	80≤	-
11	20≤	65≤	85≤	-
12	35≤	80≤	90≤	-
13	50≤	85≤	90≤	-

Minimum efficiency reporting value (MERV) is a filter rating system devised by ASHRAE (American Society of Heating, Refrigerating and Air-Conditioning Engineers) to standardize and simplify air filter efficiency ratings for the public.

The higher the MERV rating, the higher the effectiveness of the air filter.



Applicable Models



VRV

Indoor Unit		Panel	
Round Flow Cassette with Sensing	FXFSQ-A*	Standard panel	BYCQ125EAF(K)
		Standard panel with sensing	BYCQ125EEF(K)
Round Flow Cassette	FXFQ-A*	Standard panel	BYCQ125EAF(K)
Ceiling Mounted Cassette (Round Flow with Sensing) Type	FXFQ-S	Standard panel	BYCQ125B-W1
Ceiling Mounted Cassette (Round Flow) Type	FXFQ-L	Standard panel	BYCP125K-W1

* Cannot be used for Designer panel and Auto grille panel

SkyAir

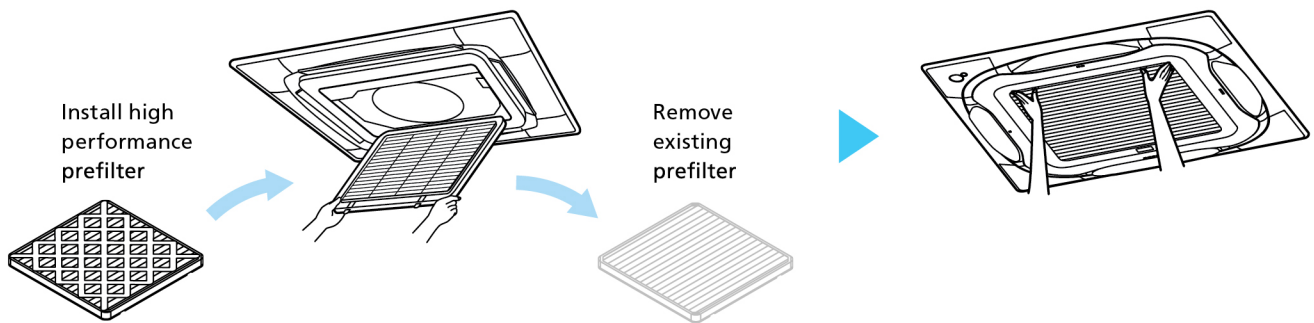
Indoor Unit		Panel	
Ceiling Mounted Cassette Type <Round Flow> (R32)	FCF series* FCFC series*	Standard panel	BYCQ125EAF(K)
		Standard panel with sensing	BYCQ125EEF(K)
Ceiling Mounted Cassette Type <Round Flow> (R410A)	FCQ series FCNQ series	Decoration panel	BYCP125K-W1

* Cannot be used for Designer panel and Auto grille panel

Easy Replacement

The existing prefilter can be replaced easily*.

Since it's a chamberless filter, the installer will remove the existing prefilter and replace it with the high performance prefilter.



* The filter should be fixed to the air conditioner with attached components, so consult your dealer when installing or replacing the filter.

VRV is a trademark of Daikin Industries, Ltd.

VRV Air Conditioning System is the world's first individual air conditioning system with variable refrigerant flow control and was commercialised by Daikin in 1982.

VRV is the trademark of Daikin Industries, Ltd., which is derived from the technology we call "variable refrigerant volume."

Specifications, designs and other content appearing in this brochure are current as of August 2021 but subject to change without notice.

SIAM DAIKIN SALES CO.,LTD.

22 Soi Onnuch 55/1
Pravet Subdistrict, Pravet District,
Bangkok 10250

Tel. 0-2838-3200
Fax. 0-2721-7607

